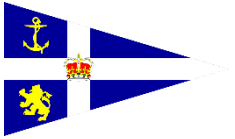




## Scotia Tree Service RC35 Scottish Championships Sigma 33 weekend



### 17<sup>th</sup> & 18<sup>th</sup> July 2022 Royal Northern and Clyde Yacht Club SAILING INSTRUCTIONS

#### SAILING INSTRUCTIONS

The notation [DP] in a rule in the SI means that the penalty for a breach of that rule may, at the discretion of the protest committee, be less than disqualification.

#### 1 RULES

- 1.1 The regatta will be governed by the rules as defined in *The Racing Rules of Sailing*.
- 1.2 The prescriptions of the RYA will apply.
- 1.3 Racing rules Race Signals; AP, 33, 35, 44.1, 44.3, 60.1(b), 61.3, 62.1(a), 62.2, A2, A4 and A5 will be changed. The changes appear in these sailing instructions.
- 1.4 RC35 and Sigma 33 Class Rules will apply.

#### 2 CHANGES TO SAILING INSTRUCTIONS

Any change to the sailing instructions will be posted before 0900 on the day it will take effect. Competitors will be notified via the methods below in 'Communications with Competitors'.

#### 3 COMMUNICATIONS WITH COMPETITORS

- 3.1 Notices to competitors will be sent via WhatsApp Owners Group and also posted on the RC35 Class Facebook Page. There will be no physical notice board.
- 3.2 Except in an emergency, a boat that is racing shall not make voice or data transmissions and shall not receive voice or data communication that is not available to all boats. [DP]
- 3.3 Boats are advised the race committee may make announcements on VHF Channel M (37).
- 3.4 Boats retiring during a race shall promptly inform the race committee on VHF Channel M (37).

#### 4 CODE OF CONDUCT

Competitors and support persons shall comply with reasonable requests from race officials. (DP)

#### 5 SIGNALS MADE ASHORE

- 5.1 No signals will be made ashore.

#### 6 SCHEDULE OF RACES ETC.

- 6.1 Racing:  
First Warning Signal each day will be as follows;

- Saturday 17<sup>th</sup> July: 11:00
- Sunday 18<sup>th</sup> July: 11.00

The Committee vessel will give an approximate location by VHF Channel M (37) on each day of racing.

There will be an informal skippers briefing at 09:30 on Saturday morning at the Committee Boat. (Enigma, Sigma 38)

**6.2** Up to 6 Races are scheduled.

**6.3** To alert boats that a race or sequence of races will begin soon, an orange flag will be displayed with one sound signal five minutes before a warning signal is made. This will be known as the attention signal.

## **7 CLASS FLAGS AND COURSES**

**7.1** Racing is For RC35 and Sigma 33 OD boats only.

**7.2** All boats will prominently display the RC35 'R' or Sigma 33 "O" Flag on their backstay.

## **8 RACING AREA**

All competing yachts will be based in and around the East Patch. Racing will be held in the waters off Helensburgh.

## **9 THE COURSE**

**9.1** The courses to be sailed will be a mix of fixed and laid courses from the options outline in Appendix A of the Sailing Instructions.

**9.2** The course to be sailed will be confirmed by the committee boat over VHF Channel M (37) who may also chose to place a board with the course number on the starboard side of the committee boat.

## **10 MARKS**

**10.1** All marks of the course will be Fixed and as described in Appendix A or orange/yellow inflatables.

## **11 OBSTRUCTIONS**

**11.1** The start /finish line will be an obstruction and only passed through at the start or completion of a round.

## **12 THE START**

**12.1** To alert boats that a race will begin soon, an orange flag will be displayed with one sound signal not less than 5 minutes before the warning signal is made.

**12.2** Races will be started using RRS 26.

**12.3** The starting line will be between two inflatable marks

**12.4** A boat that does not start within 5 minutes after the starting signal will be scored Did Not Start without a hearing. This changes RRS A4 and A5.

**12.5** Any boat identified as On Course Side at the start, the Race Committee may broadcast on VHF M (37) Failure to do so will not be grounds for redress. This changes RRS 62.1 (a).

**12.6** The Starting sequence will be RC35 then Sigma 33, in the event of a general recall of the RC35s this will not interrupt the sequence and their (RC35) warning signal will be hoisted at the start of the Sigma 33 class.

## **13 CHANGE OF THE NEXT LEG OF THE COURSE / SHORTENING COURSE**

**13.1** To change the next leg of the course, the race committee will (may) move the original rounding mark (or the finishing line) to a new position.

**13.2** Minor Course changes may not be signalled. This Changes RRS 33.

**13.3** In addition to RRS 32 the course may be shortened by positioning a Race Committee vessel, adjacent to either a rounding mark or the gate, displaying flag F and making sound signals. Boats shall round the adjacent mark or pass through the gate and sail directly to the finish line and finish.

## **14 FINISH**

**13.1** The finishing line will be between two inflatable marks unless the committee require to shorten the course as per SI no. 13.3.

## **15 PENALTY SYSTEM**

**15.1** The Exoneration Penalty and the RYA Arbitration Procedures of the RYA Rules Disputes Procedures will be available. See the official notice board for details. Decisions from Arbitration can be referred to the protest committee but cannot be reopened or appealed.

**15.2** Scoring penalty RRS 44.3 shall not apply.

**15.3** The two turns penalty shall be replaced by one- turn penalty (including 1 tack and 1 gybe). This changes RRS 44.1.

## **16 TIME LIMITS**

**16.1** In windward leeward races boats failing to finish within 20 minutes after the first boat in her class sails the course and finishes will be scored Did Not Finish without a hearing. This changes RRS 35, A4 and A5.

## **17 PROTESTS AND REQUESTS FOR REDRESS**

**17.1** Boats intending to protest for an incident on the race course shall inform the Race Committee vessel at the finish line or in the coastal race by calling the race committee on VHF Channel M (37).

**17.2** Protest forms are available from the Committee Boat. Protests and requests for redress or reopening shall be delivered there within the appropriate time limit.

**17.3** The protest time limit is 60 minutes after the last boat has finished the last race of the day or the race committee signals no more racing today, whichever is the later. The same time limit applies to protests by the race committee and protest committee about incidents they observe in the racing area and to requests for redress. This changes RRS 61.3 and 62.2.

**17.4** Notices will be posted on the Committee Boat within 30 minutes of the protest time limit to inform competitors of hearings in which they are parties or named as witnesses. Hearings will be held in/on the Committee vessel or other location to be advised at the logging of the protest.

**17.5** Notices of protests by the race committee, technical committee or protest committee will be posted to inform boats under RRS 61.1(b).

**17.6** Breaches of instructions 19, 21, and 25

will not be grounds for a protest by a boat. This changes RRS 60.1(a). Penalties for these breaches may be less than disqualification (DP) if the protest committee so decides.

**17.7** On the last scheduled day of racing a request based on a protest committee decision shall be delivered no later than 30 minutes after the party requesting reopening was informed of the decision on that day. This changes RRS 62.2.

## **18 SCORING**

**18.1** One race will be required to constitute a series.

When *four* or less races are completed, a boat's series score will be the total of her race scores.

When *five* or more races have been completed, a boat's series score will be the total of her race scores excluding her worst score.

## **19 SAFETY REGULATIONS (DP)**

**19.1** All boats shall comply with RC35 Class Rules or Sigma 33 rules

**19.2** Boats shall not carry anchors that project ahead of the bow.

**19.3** A boat that retires from a race shall notify the race committee as soon as possible.

**20 REPLACEMENT OF CREW OR EQUIPMENT (DP)** - Not applicable at this event.

## **21 EQUIPMENT AND MEASUREMENT CHECKS (DP)**

**21.1** A boat or equipment may be inspected at any time for compliance with the class rules and sailing instructions.

**22 SUPPLIED BOATS** – Not applicable to this event.

**23 OFFICIAL VESSELS** – Committee Vessel; `Enigma` (Sigma38) and accompanying rib `Wee Enigma`.

**24 SUPPORT BOATS** – Not applicable to his event.

## **25 TRASH DISPOSAL**

**25.1** Trash must not be disposed of overboard. (DP)

**26 BERTHING** – Not applicable to this event.

**27 HAUL-OUT RESTRICTIONS** - not applicable to this event.

**28 DIVING EQUIPMENT AND PLASTIC POOLS** – not applicable to this event.

**29 PRIZES**

The RC35 Class Championship Trophy.

Place prizes and other prizes will be awarded at the discretion of the Organising Authority.

The Prize Giving will be held ashore in Rhu Marina Marque as soon as possible after the last race.

**30 RISK STATEMENT**

30.1 RRS 3 states; ` The responsibility for a boats decision to participate in a race or continue to race is hers alone`. By participating in this event each competitor agrees and acknowledges that sailing is potentially dangerous activity with inherent risks. These risks include strong winds and rough seas, sudden changes in weather, failure of equipment, boat handling errors, poor seamanship by other boats, loss of balance on an unstable platform and fatigue resulting in increased risk of injury.

**Inherent in the sport of sailing is the risk of permanent, catastrophic injury or death by drowning, trauma, hypothermia or other causes.**

30.2 Risk Statement is as agreed on the Race Entry Form, and participants are to be reminded there is an element of risk in the sport and by participating they acknowledge their acceptance of this risk.

**31 INSURANCE**

31.1 Each participating boat shall be insured with valid third-party liability insurance with a minimum cover of £3,000,000.00 Sterling per incident or the equivalent.

**32 FURTHER INFORMATION**

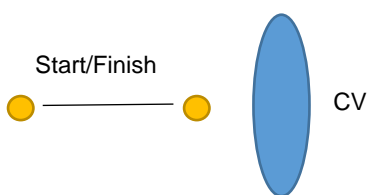
For further information please contact: RC35 Class Secretary Christine Murray: [christine@teamelf.co.uk](mailto:christine@teamelf.co.uk) / 07736 008 612

**33 COURSES**

Course options which will be announced on VHF Channel M (37).

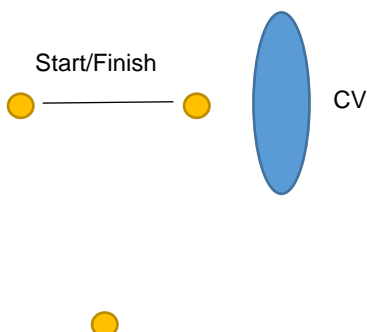
**33.1**

The Start Finish will be set up as below



**33.2**

If the leeward mark is to be a laid mark the set up will be as below.



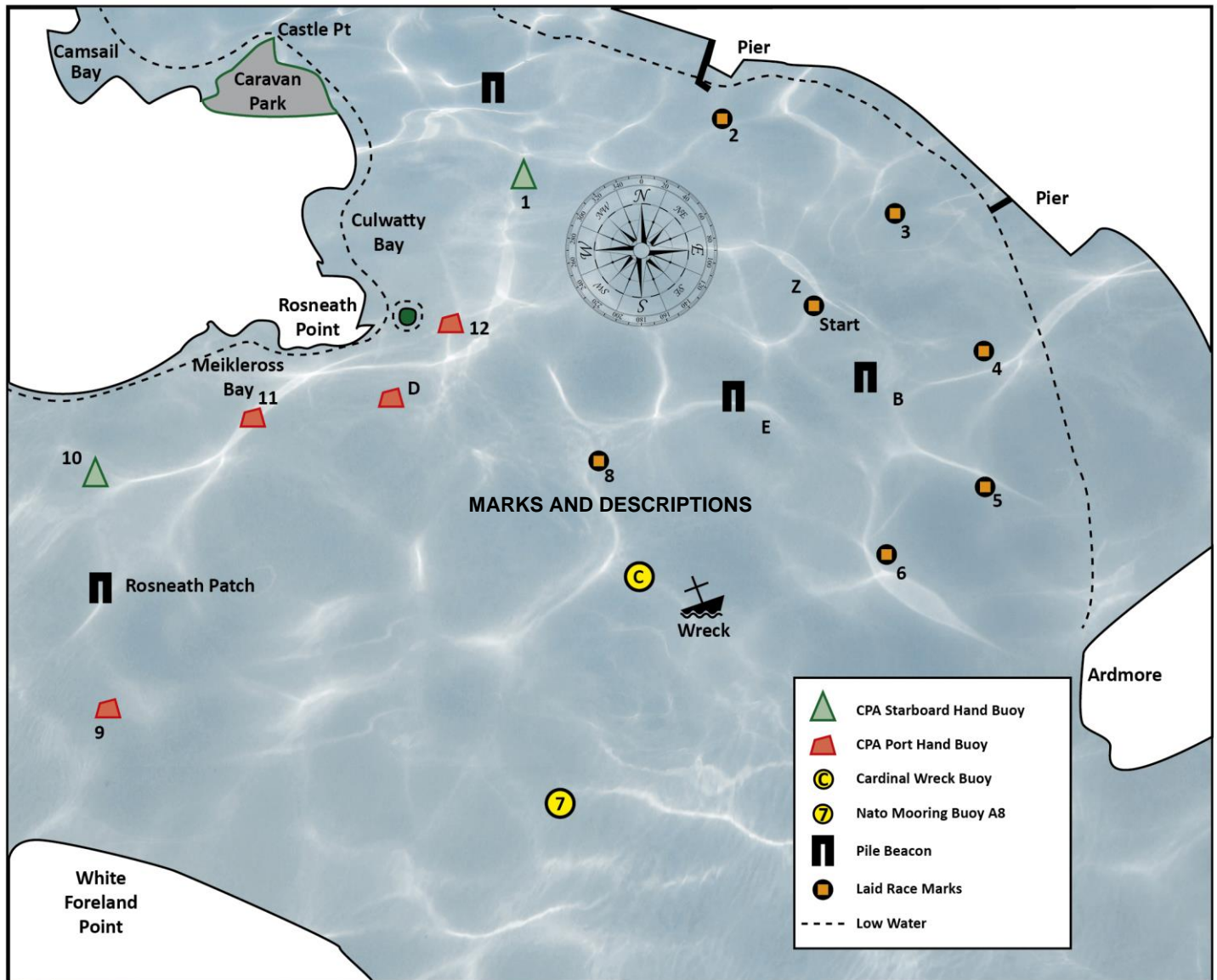
## 34 (DP) CLYDEPORT/PEELPORT AND QUEEN'S HARBOUR REGULATIONS

Attention is drawn to the International Regulations for the prevention of Collisions at Sea, 1972. Particular notice should be taken of rule 9b which states 'a vessel less than 20 metres in length or a sailing vessel shall not impede the passage of a vessel which can only navigate within a Narrow Channel or Fairway'. 'Recommended Channels' are shown on Admiralty Chart 1994. Yachts must regard any such 'Recommended Channel' as a 'Narrow Channel' within the meaning of the IRPCS 9b. Furthermore, Clydeport/Peelports Operations Limited has decreed that any waters of the Firth of Clyde where vessels by virtue of their size, speed or proximity to land, hazards and other vessels are unable to manoeuvre freely must be regarded as a 'Narrow Channel'. This also applies in water of the Queens Harbour. CP/PP waters are to the south and west and QH waters to the north of a line from Rosneath Point to a point approximately halfway between Craigendoran Pier and Ardmore Head (Admiralty Chart 1994 refers). Whilst racing, any yacht which is unable to for reasons of lack of wind or other cause, to sail clear of a large power-driven vessel shall start her engine and/or paddle in order to keep clear and thereafter shall report full detail to the EP Race Committee. Competitors are reminded of the CP/PP Byelaw which prohibits yachts and other craft from manoeuvring within 100 meters of any ferry terminal.

The restricted Channel into the Gareloch, off Helensburgh Sailing Club and extending to the southern limit of the Queen's Harbour, may be closed by the Queen's Harbour Master for the passage of large naval vessels. IC Flag U flown by the PCV will indicate if this is likely. The requirement described above MUST be met, any instructions received from MOD Police in accompanying RIBs or launches must be promptly obeyed. Breach of this rule will be decided by the Protest Committee.

# APPENDIX A fixed Marks

## EAST PATCH RACING AREA COURSE CHART



- |                                  |                                    |
|----------------------------------|------------------------------------|
| 1. Nav. Buoy "Row" Green         | 10. Nav. Buoy ARD 5 Green          |
| 2. Laid mark, yellow/black       | 11. Nav Buoy ARD 8 Red             |
| 3. Laid mark, yellow/black       | 12. Nav. Buoy No. 24 Red           |
| 4. Laid mark, yellow/black       | Z. Laid start/finish line mark     |
| 5. Laid mark, yellow/black       | B. Pile Beacon, Yellow (East)      |
| 6. Laid mark, yellow/black       | C. Wreck Buoy, Yellow/Black/Yellow |
| 7. Nato Buoy A.8 Large Yellow    | D. Nav. Buoy ARD 10 Red            |
| 8. Laid mark, topmark yellow/red | E. Pile Beacon, Yellow (West)      |
| 9. Nav. Buoy No. 27 Red          |                                    |

NB (a) When it is not a mark on the course, Nav. Buoy No. 24 Red (Mark 12) must be left on the proper hand.  
 (b) Laid marks Nos. 2-6 inclusive are yellow black marks unlike any other in the area